

# How & Where to Purchase

## BAND & ORCHESTRA CONCERT ATTIRE "SPARE PARTS"

◆ TUXEDO SHIRTS    ◆ CUMMERBUNDS    ◆ BOWTIES

Young men enrolled in:

- ◆ CONCERT ORCHESTRA
- ◆ PERCUSSION ENSEMBLE
- ◆ SYMPHONIC BAND
- ◆ SYMPHONY ORCHESTRA
- ◆ ADVANCED PERCUSSION ENSEMBLE
- ◆ WIND ENSEMBLE

are each responsible for **purchasing**:

- a **WHITE WING COLLAR SHIRT**,
- a **BLACK poly/satin BOW TIE**
- a **BLACK poly/satin CUMMERBUND**



for use with the concert attire (tuxedo jacket/pants) furnished by the LFHS Music Department.

**COMPLETE CONCERT ATTIRE** (tuxedo jacket, tuxedo pants, wing collar shirt, cummerbund and bow tie) **IS REQUIRED** BY ALL BAND AND ORCHESTRA MEN AT ALL DESIGNATED SCHOOL CONCERTS.

If shirts, cummerbunds or bowties are damaged or lost, or shirts become too small... replacements can be purchased from the following source:

### TUXEDO WHOLESALER

Please contact a sales representative (toll free) at 1-800-828-2802 or email them at [questions@tuxedowholesaler.com](mailto:questions@tuxedowholesaler.com)

Allow 2 – 4 weeks for delivery

The size chart for the wing collar shirts is referenced below:

#### 18. Shirts: All Adult Mens Styles

SIZE	XS1	S1	S3	S5	S7	S9	M1	M3	M5	M7	M9	
NECK	13	14	14	14	14	14	15	15	15	15	15	
SLEEVE	30-31	30-31	32-33	34-35	36-37	38/39	30-31	32-33	34-35	36-37	38/39	
SIZE	L3	L5	L7	L9	XL3	XL5	XL7	XL9	2XL3	2XL5	2XL7	2XL9
NECK	16	16	16	16	17	17	17	17	18	18	18	18
SLEEVE	32-33	34-35	36-37	38/39	32-33	34-35	36-37	38/39	32-33	34-35	36-37	38/39
SIZE	3XL3	3XL5	3XL7	3XL9	4XL3	4XL5	4XL7	4XL9	5XL3	5XL5	5XL7	5XL9
NECK	19	19	19	19	20	20	20	20	21	21	21	21
SLEEVE	32-33	34-35	36-37	38/39	32-33	34-35	36-37	38/39	32-33	34-35	36-37	38/39

Not all shirts are available in boys' sizes. Consult your sales representative for more information

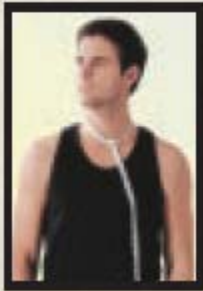
## Wing Collar Shirt

**One-quarter inch WHITE pleated shirt, with a standard wing collar and placket front, long sleeve & barrel cuff.**

65/35 poly cotton blend, machine wash/dry. (Chart 18, 1)

### How to Measure for Wing Collar Shirts

REQUIRED MEASUREMENTS FOR SHIRTS: NECK and SLEEVE



**1. Neck...** Gently wrap the measuring tape around the neck leaving room for 1 finger between the neck and collar.



**2. Sleeve...** With coat off and one arm bent (good cue word...Like you are playing a trumpet). Measure from the middle of the back of the neck (top vertebra), over the high point of the shoulder, down around the elbow to the wrist bone.

## Cummerbund & Bow Tie

**2" Banded BLACK bow tie & cummerbund.**

### ORDERING OPTIONS:

#### Cummerbund in Poly Satin

black 100% poly deluxe satin, machine wash/dry

#### Tie in Poly Satin

in Black 100% poly deluxe satin. Machine wash / Air dry

#### Complete T&C (tie & cummerbund) set in Poly Satin